

CWI: Existing Systems & Future Goals

MGWA 2009 Fall Conference

Bruce Olsen

Minnesota Department of Health



County Well Index

- Shared Database Between MDH and MGS
- Oracle Database Operated on MDH Server
- Contains 443,000 Records
- About 213,000 (48%) Have Verified Locations

Basic Data

- Construction Information/Driller
- Geologic Log
- Water Level/Pumping Information
- Well Name/Owner
- Location Provided by Driller (PLS)
- Reference to Cuttings, Geophysics, etc.
- Alternate Identifiers

Enhanced Data

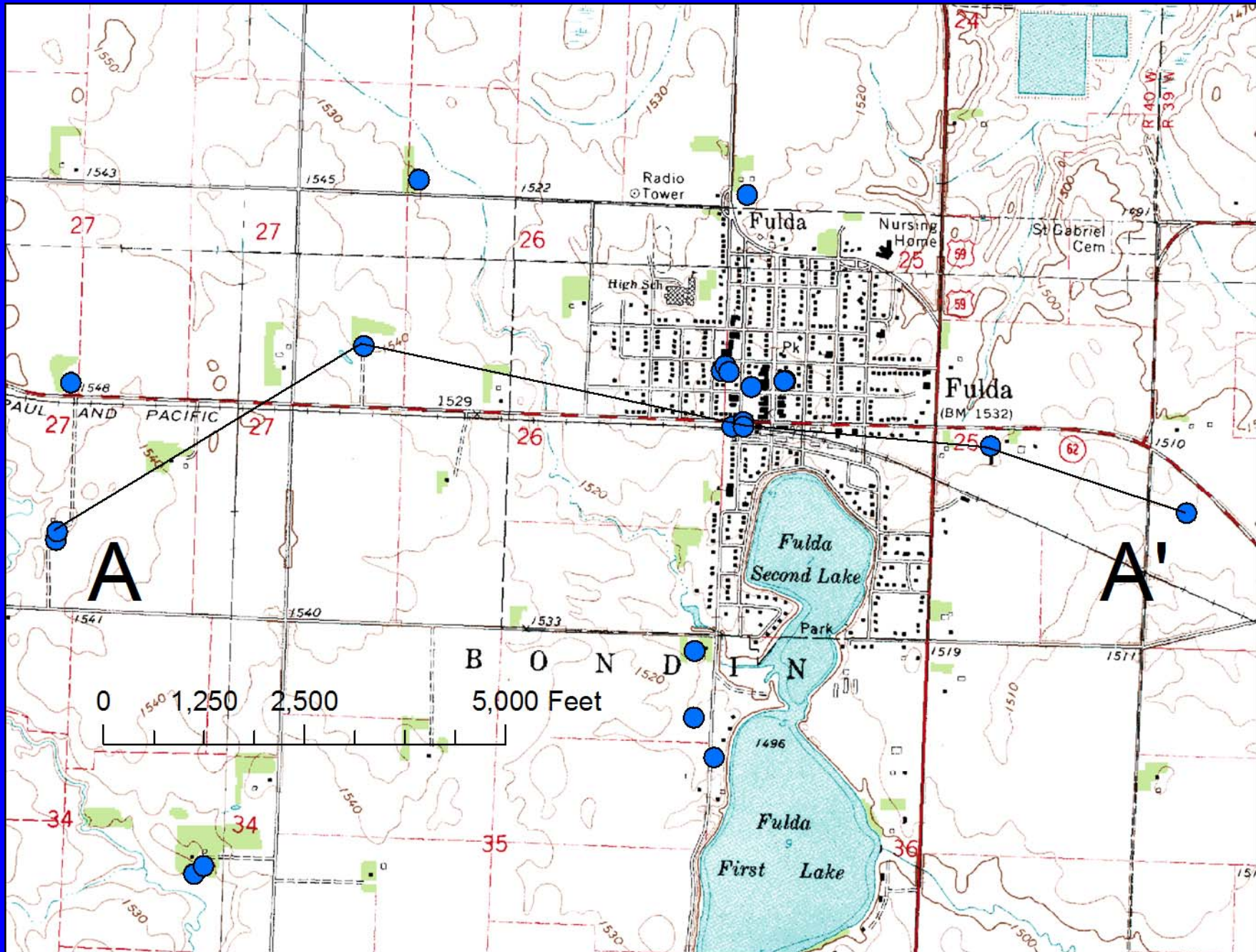
- Verified Well Location (25 Meter Accuracy)
- Stratigraphic Interpretation of Geologic Log
- Aquifer Designation
- About 165,00 (37%) of Records Have This

Accessing CWI

- Version 5.0 for Personal Computers
- CWI Online (No Public Well Data)
- GIS Layer
- Agency Access Through MDH Firewall

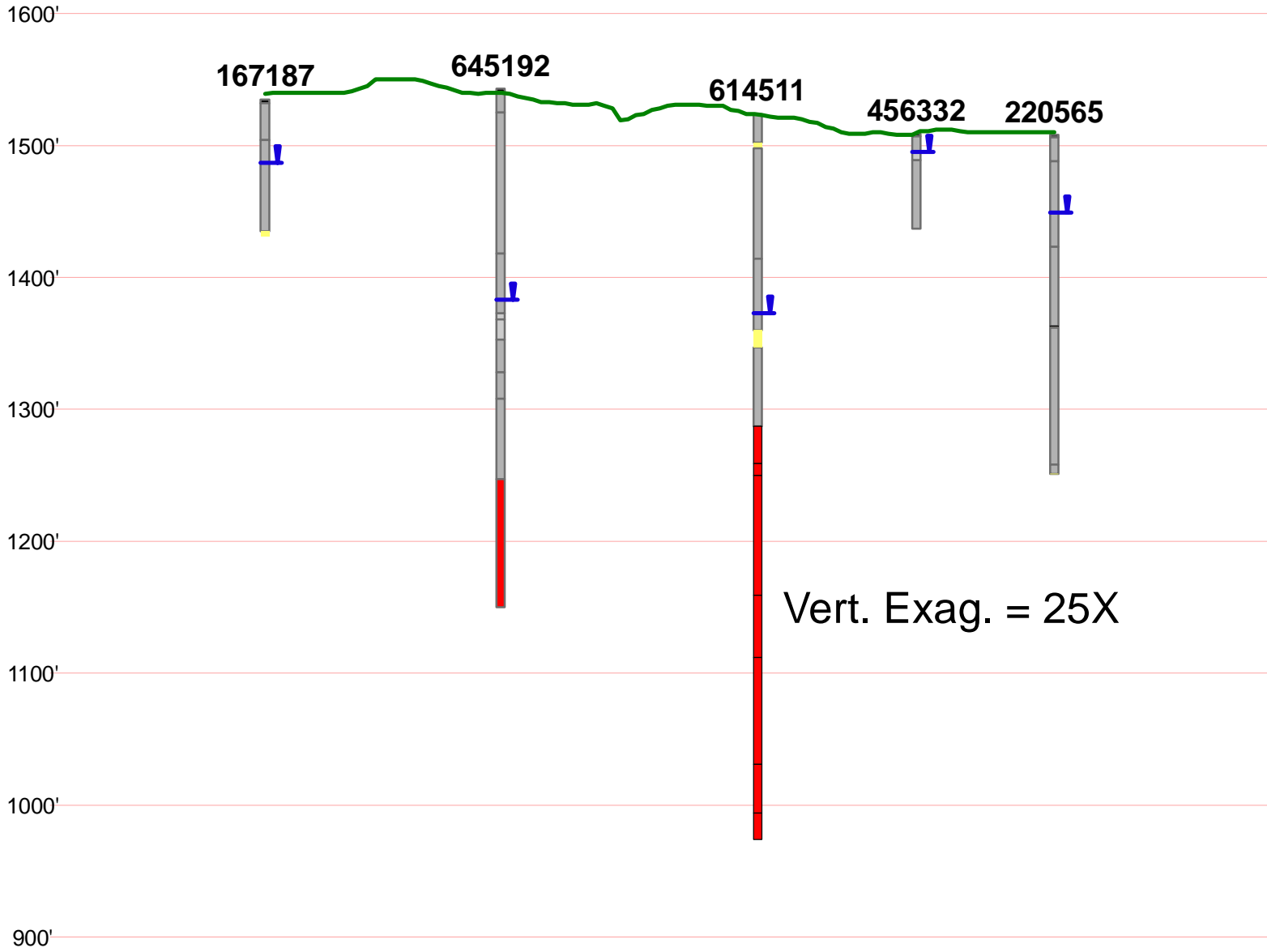
Linking CWI to GIS

- Provides Three Dimensional Analysis of Datasets Developed from CWI
- Decreases Time Needed to Create New Datasets From CWI
- Enables More Rapid Evaluation of Subsurface Hydrogeologic Conditions



A

A'



Vert. Exag. = 25X

HOUSE KEEPING NEEDS

- Correct Recompiling Errors
- Re-interpret Stratigraphy
- Update the Status for Sealed Wells
- Develop Hydrostratigraphic Codes for Aquifers

FUTURE PLANS

- Complete Entry of Historical Well Logs
- Add Images of Original Well Logs
- Water Chemistry Data (Under Construction)
- Link to Aquifer Test Database
- Link to Well Sealing Records
- Link to Well Notification Records

FUNDING CWI

- No Direct State Funding
- Project Funding at MGS
- Federal Funding at MDH to Support Drinking Water Protection

WHY SUPPORT CWI?

- Principle Source of Subsurface Geological Information
- Provides Direct Access to Well Construction Information
- Provides a Mechanism to Link State/Local Agency Data Pertaining to Wells

BUSINESS ISSUES

- Assigning Unique Numbers
- Whose Location is Most Accurate?
- Who Can Edit Well Construction Info?
- Whose Geologic Interpretation Is Best?
- Need for Hydrostratigraphic Codes for Aquifers
- Standard Format for Data Transfer

QUESTIONS