

# “It’s like we don’t exist,”

## Olmsted County Water Source Database Project

Identify the water source for each residential and business address in Olmsted County

A Water Source Database (WSdB) is being developed to permanently link address, water source, and water quality data.

## Landowners keep battle alive against proposed hog farm

Brian Todd, [btodd@postbulletin.com](mailto:btodd@postbulletin.com) Mar 18, 2017

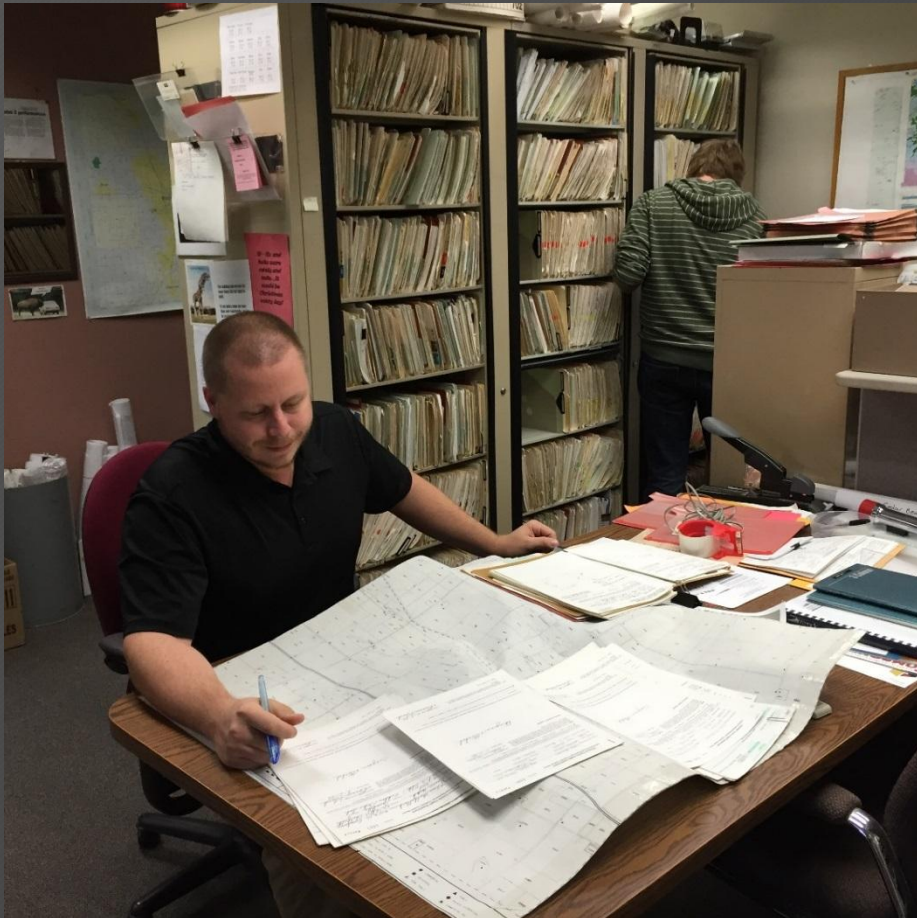


Ken Klotzbach / [kklotzbach@postbulletin.com](mailto:kklotzbach@postbulletin.com)

Fred Fredrickson grabs a barn cat he calls Zippy near the well pump at his dairy farm. “It’s like we don’t exist,” said Fredrickson nothing that his well wasn’t noted on the environmental impact study.



# INVENTORY PROCESS



## Inventory Process

- Includes location and construction information
- Review state & county well records - logs, water quality data & previous studies
- Also includes county serviced properties - polygons for serviced areas such as city public utilities

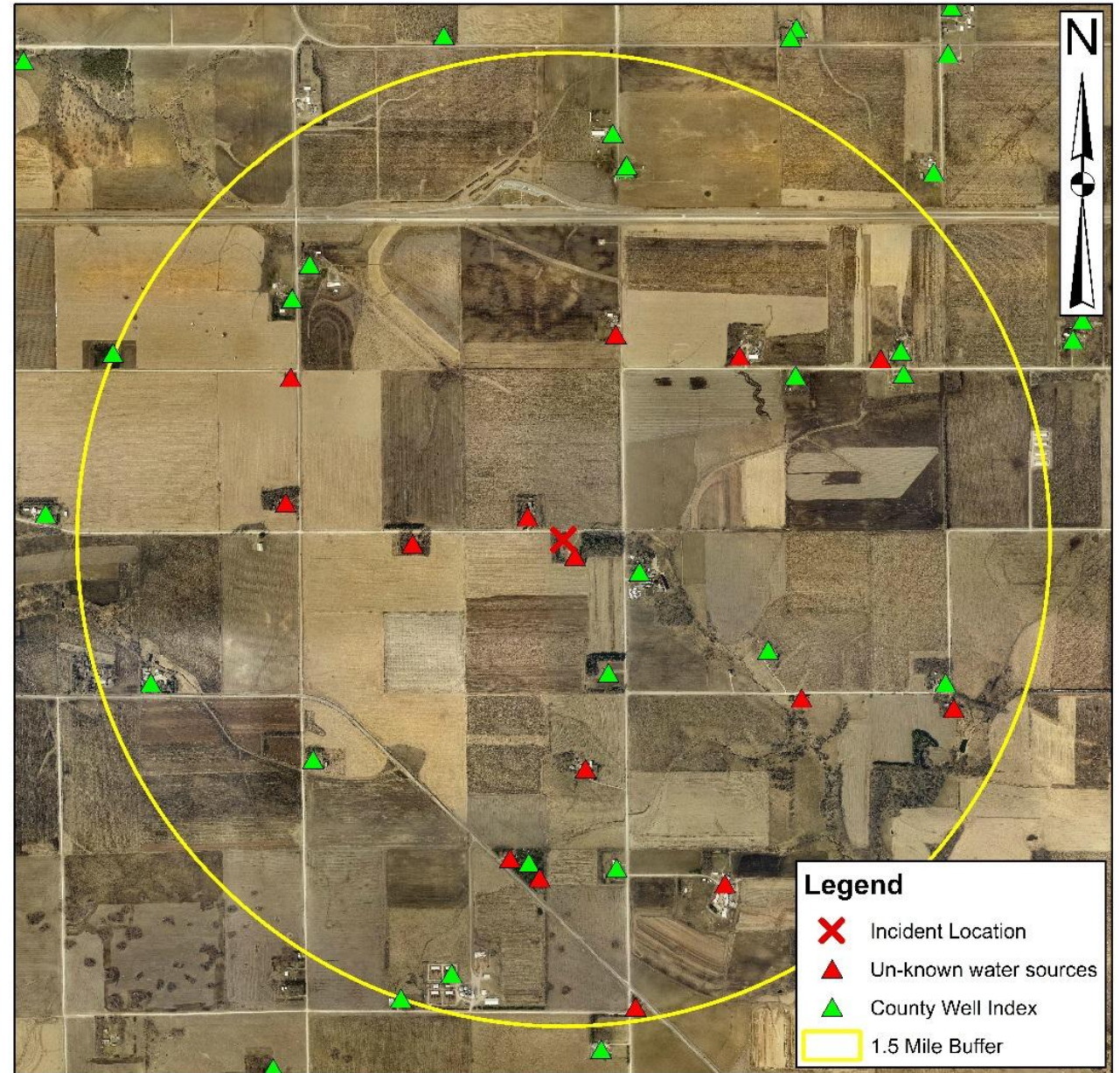
## Link Inventory to County Lab Water Quality Data

- Approximately 60,000 from 1964 - present
- 300,000 test results (anions since 1987.)

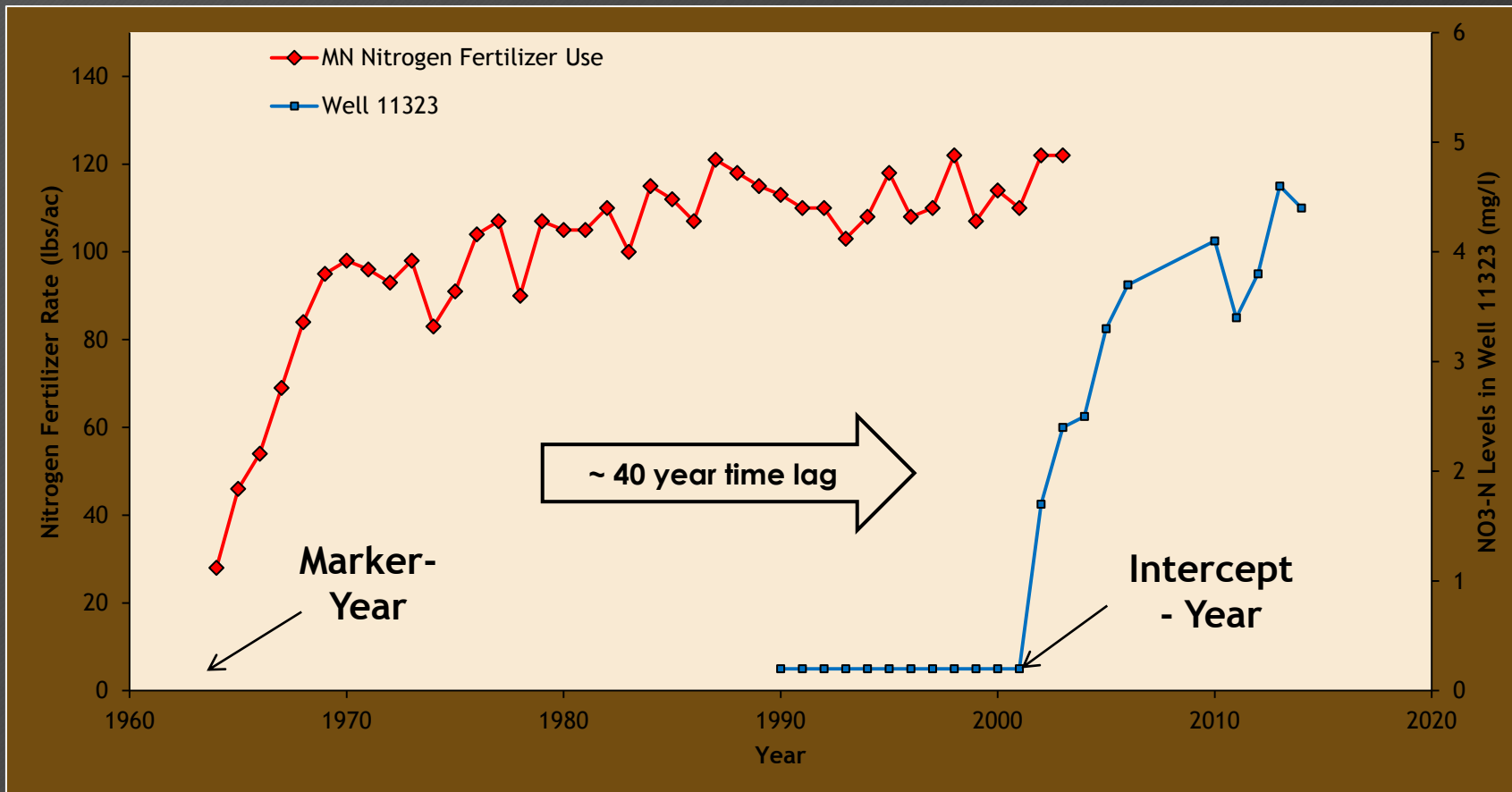


# EMERGENCY RESPONSE

- Fast response
- Identify the public at risk
- Information for 14 of 32 wells was not available during a 2013 brown water incident.



# STATISTICAL ASSESSMENT



- Expands well vulnerability to aquifer vulnerability
- Age
- Trends