

Shared Aquifers and C.A.M.P. Collaborations

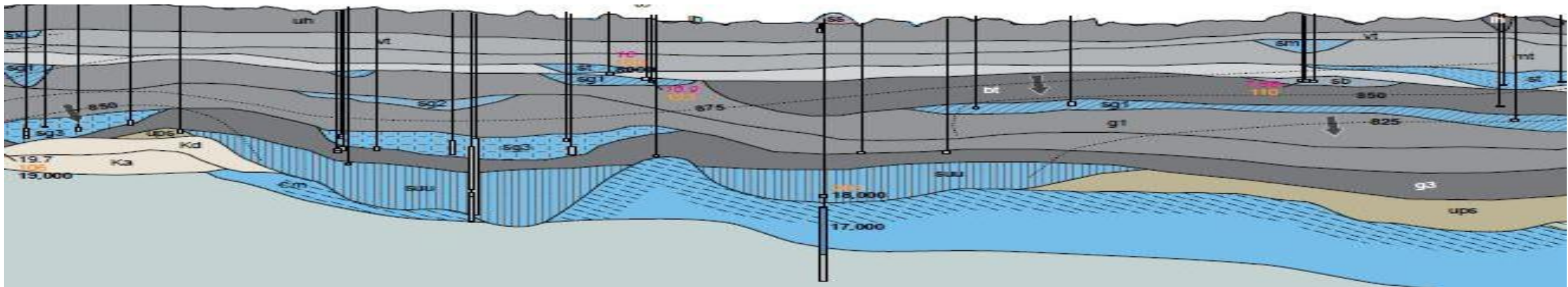
Community-based Aquifer Management Partnerships

mi DEPARTMENT OF
NATURAL RESOURCES
Tim Gieseke, Region 4 Groundwater Planner

MGWA 2018 Fall Conference

Successes, Near-misses, and Failures – Regional Groundwater Planning

Thursday November 15, 2018



A photograph of a dirt path winding through a forest. The path is flanked by dense green foliage and trees. In the distance, two people are walking away from the camera. The scene is bright and natural.

The Path to Failure is paved with Mistakes

A close-up photograph of a dirt path in a forest. The path is surrounded by lush green plants and trees. The path leads into the distance, suggesting a journey or a path.

The Path to Success is paved with a Few More

Key Lessons from our first CAMPs

A little bit of (not more) info can go along way in creating relationships

Groundwater “Joint Checking Account” resonates with communities
(Land Use Decisions = Water Use Decisions)

Conservation becomes difficult when one or more parties lose

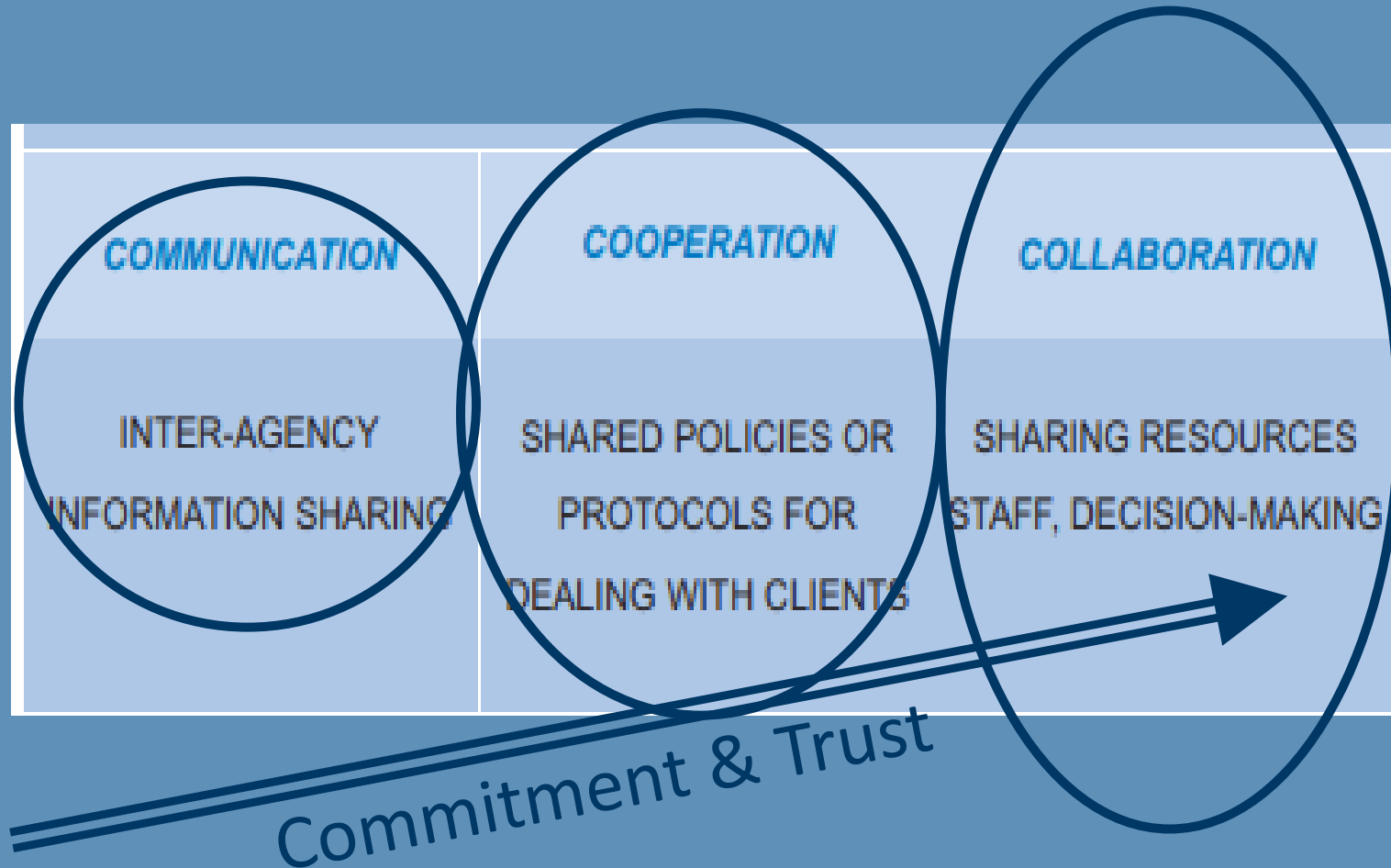
PART 1:
Aquifer Co-
Management

State agencies may give correct, but conflicting advice

Communities appreciate a collaborative approach for their “water cycle”

PART 2:
Community’s
Water Cycle

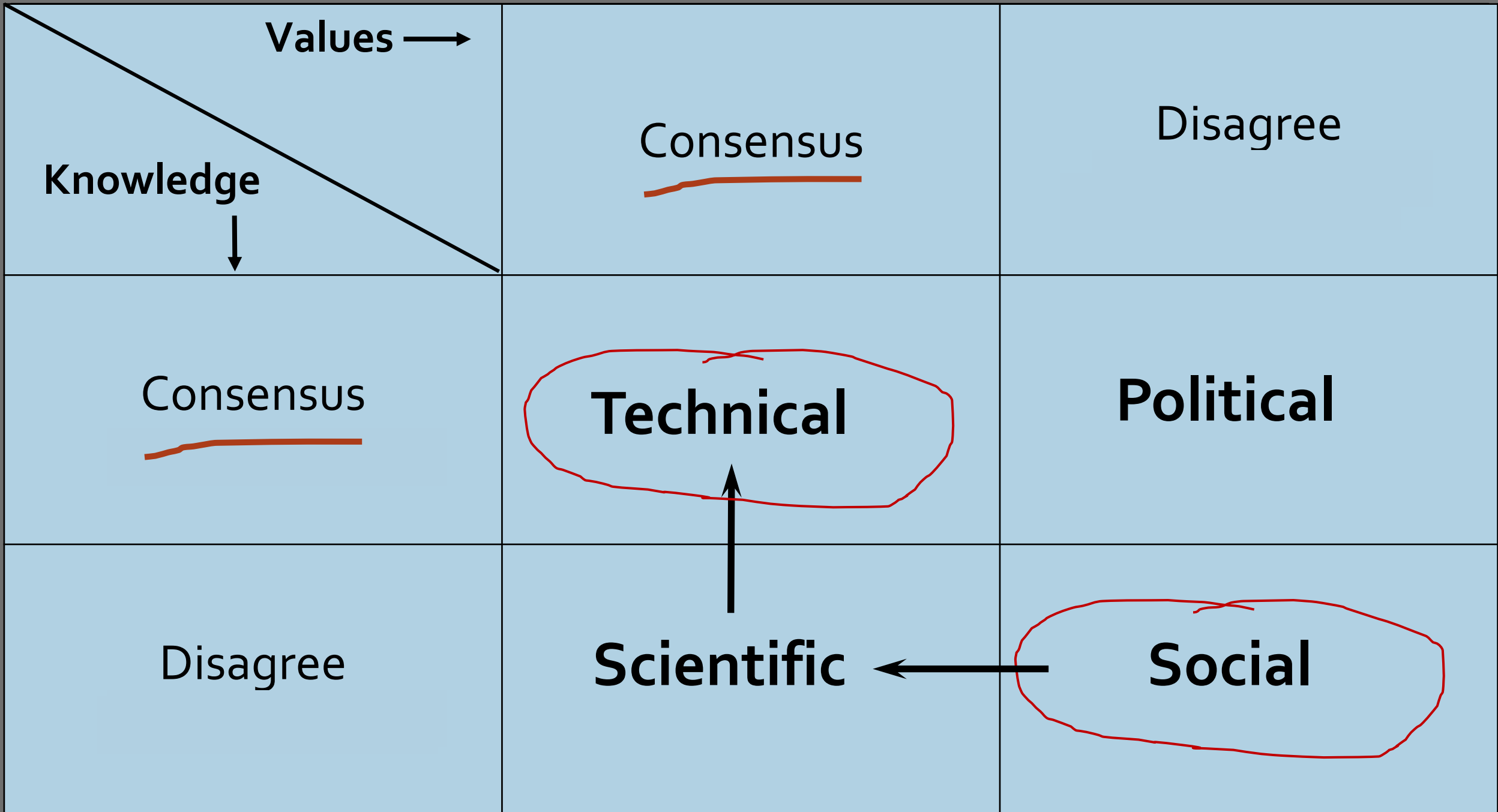
A CAMP Collaboration falls on a continuum of relation building





C.A.M.P.
begins by
addressing
the
social issue

...with
social
science



What is the CAMP starting point for Community Leaders?*

- LGUs sense groundwater is up to them to solve since feds and state couldn't.
- Locals want data provided to them without having to ask.
- LGUs want site-specific information and recommended actions.
- LGUs feel far less knowledgeable about of groundwater compared to surface water management.

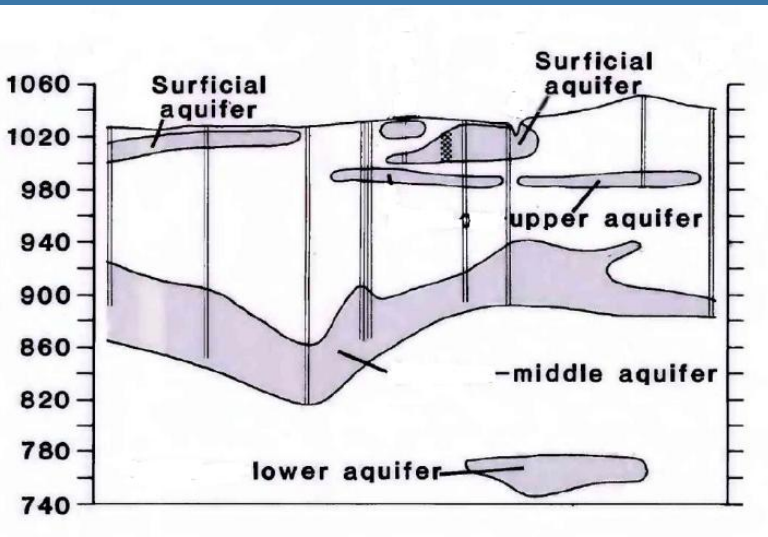
Summary.....Communities are asking for a:

“limited amount of unknown and specific information packaged in a useable format”

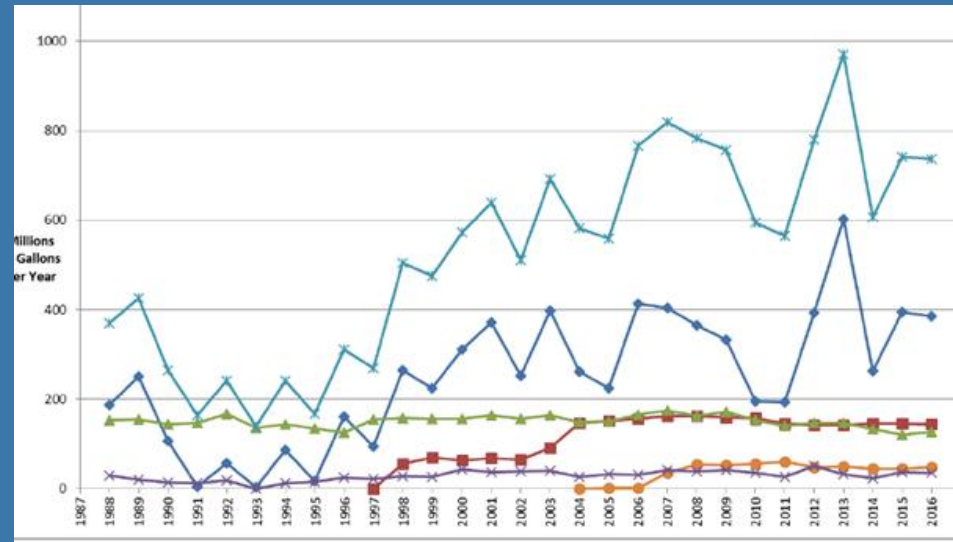
** Freshwater Society Findings in their work with communities and groundwater*

CAMP Dashboard

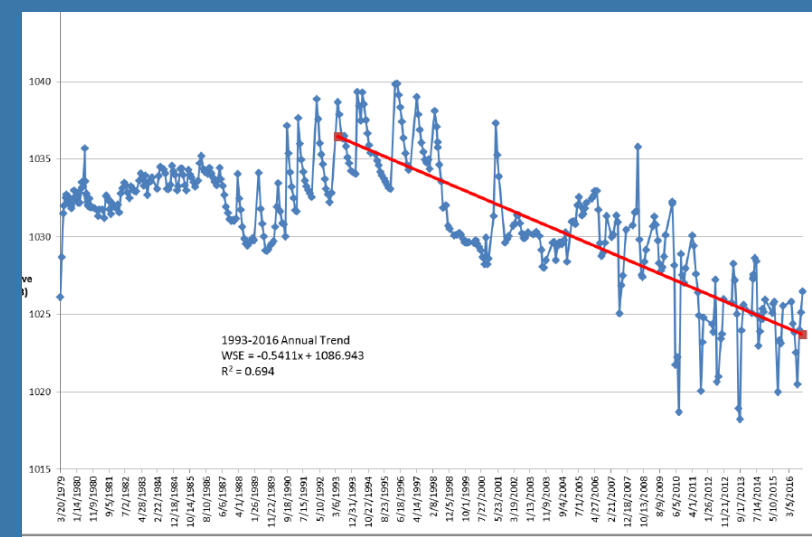
Aquifer Cross-sections



Groundwater Use Trends

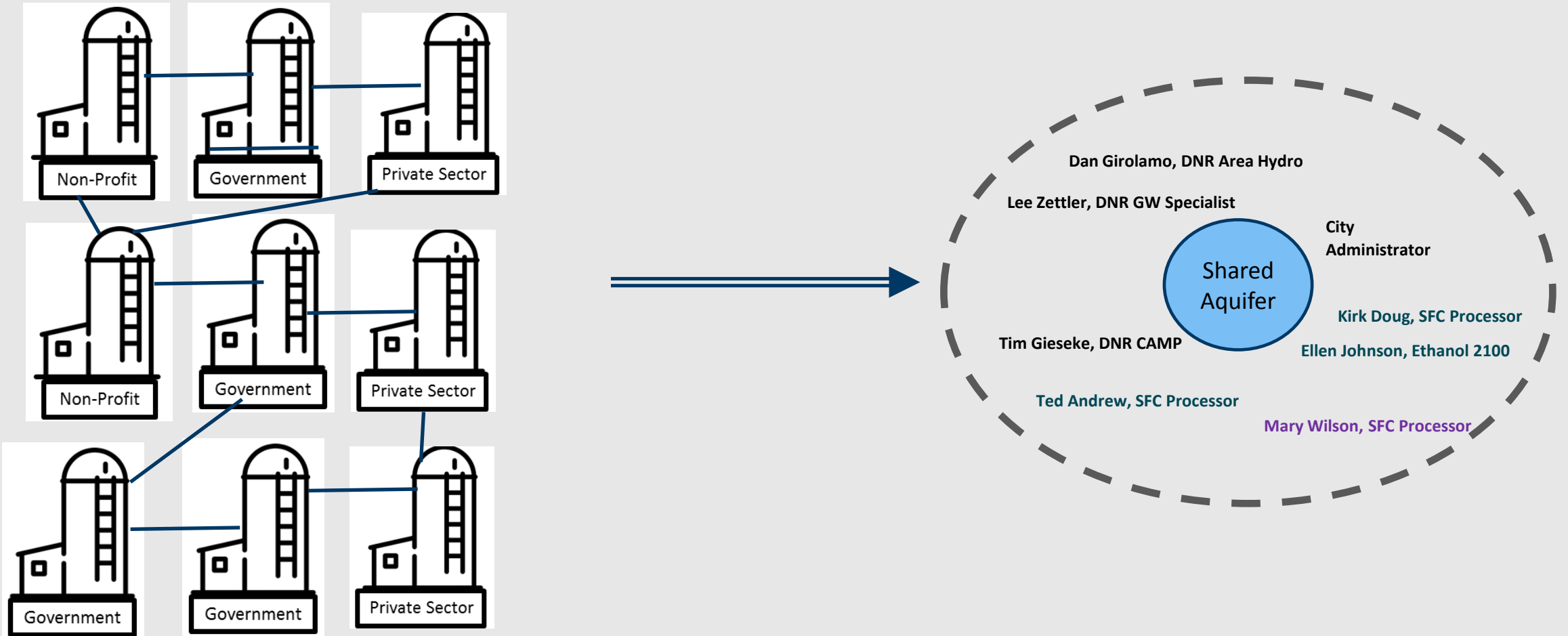


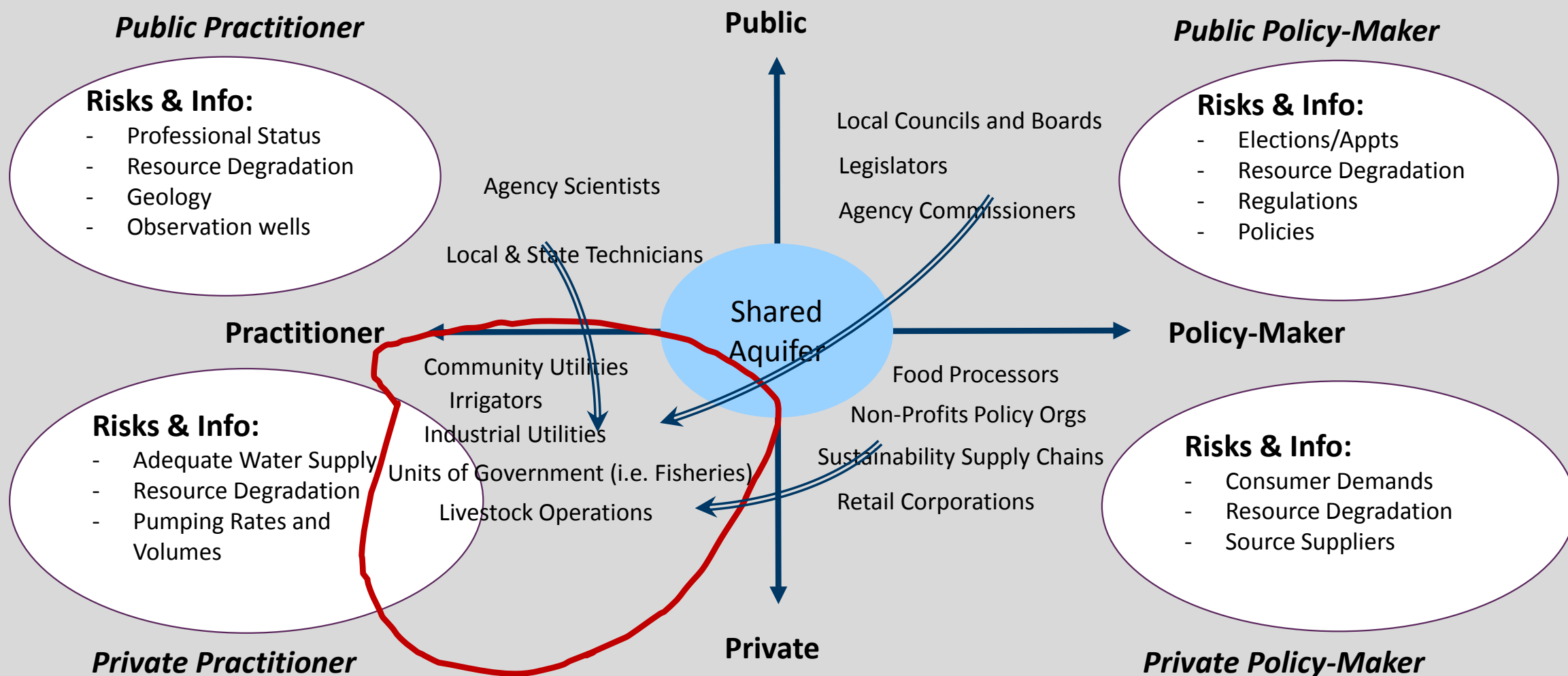
Observation Well data



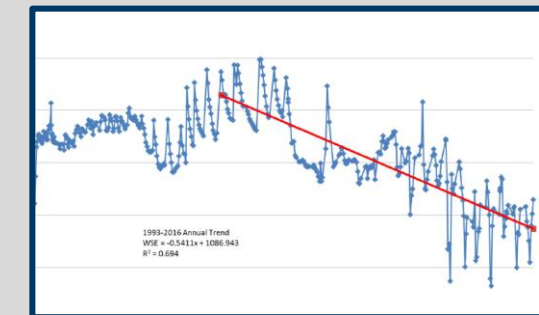
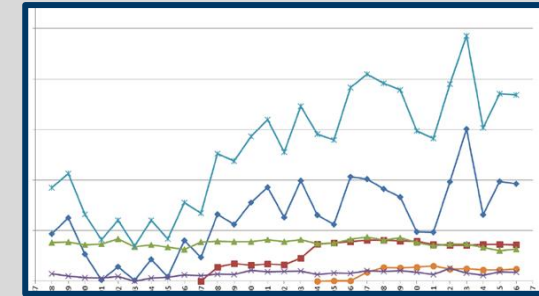
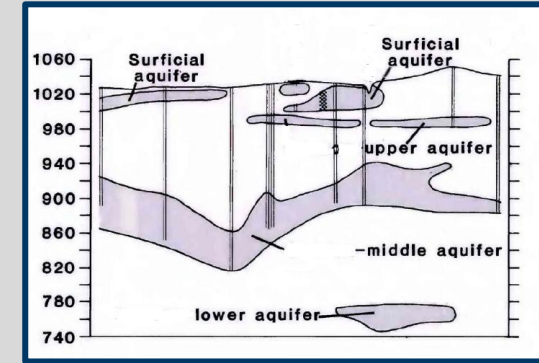
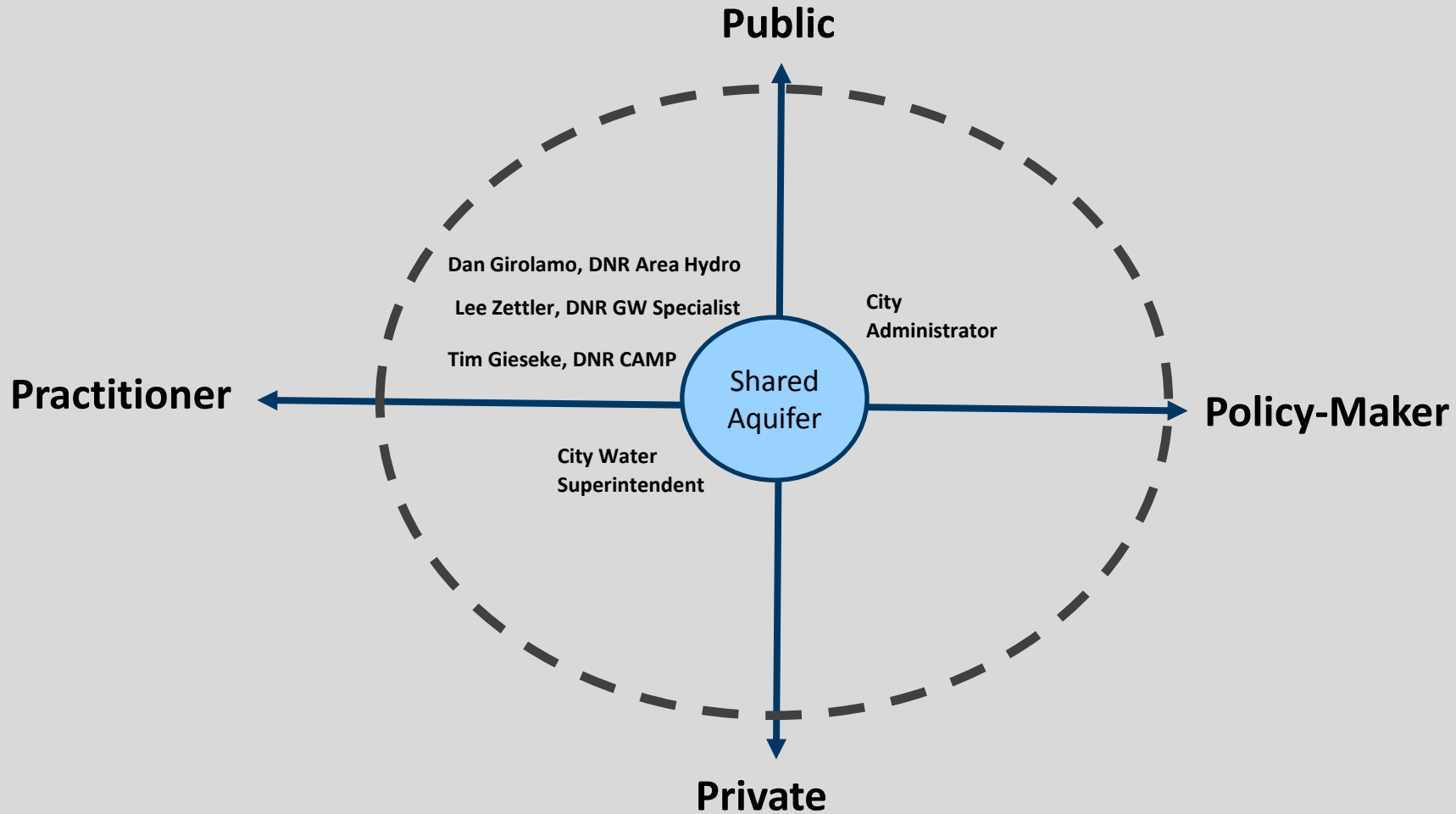
The Good News: Scientific and technical data can help build a collaboration

The CAMP Dashboard supports the transition from Interconnected Silos..... to a Collaboration



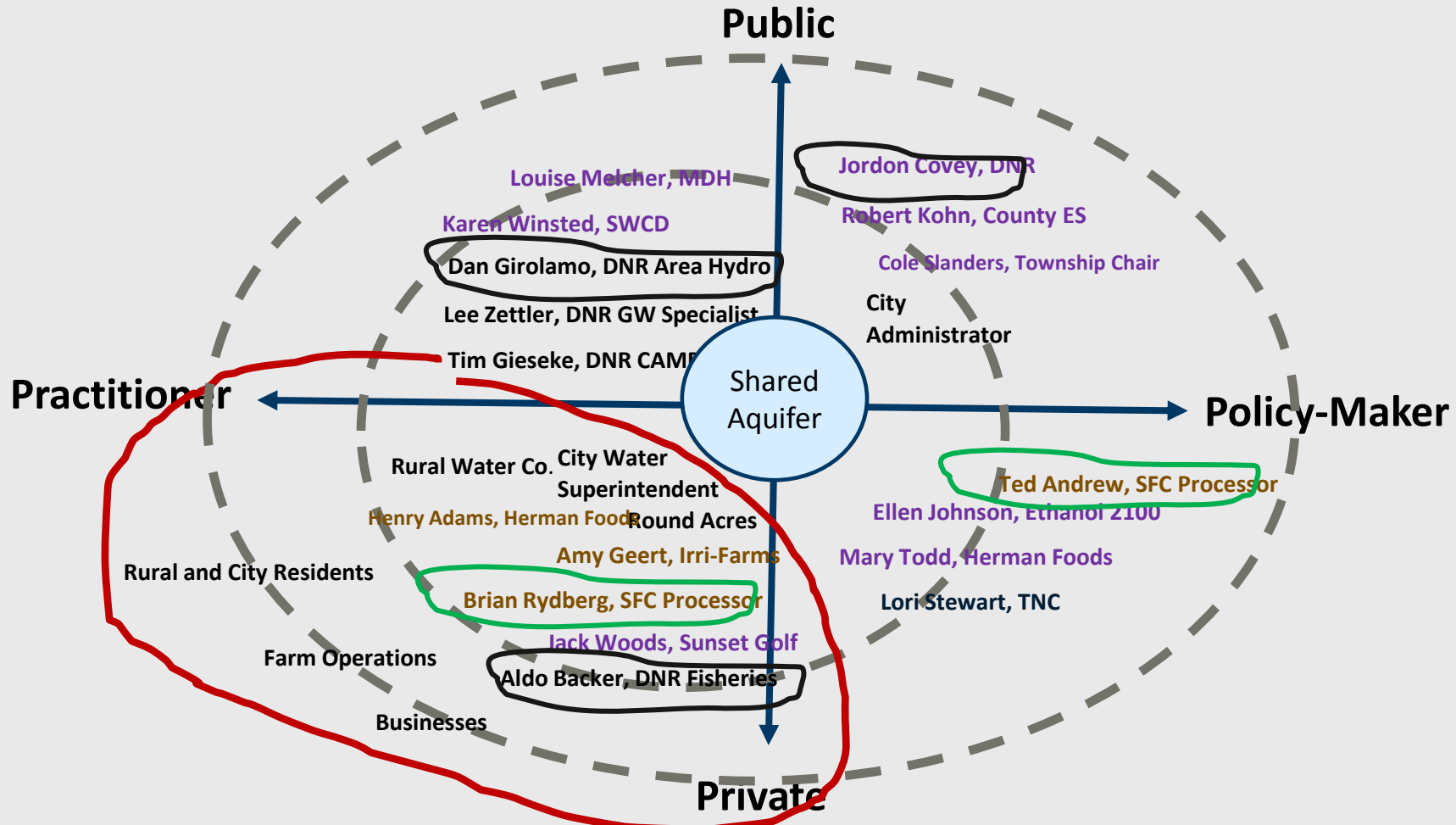


Starting a CAMP Collaboration



It creates the opportunity “to ask the next good question”

Building a CAMP Collaboration



Write the "Groundwater Checks"

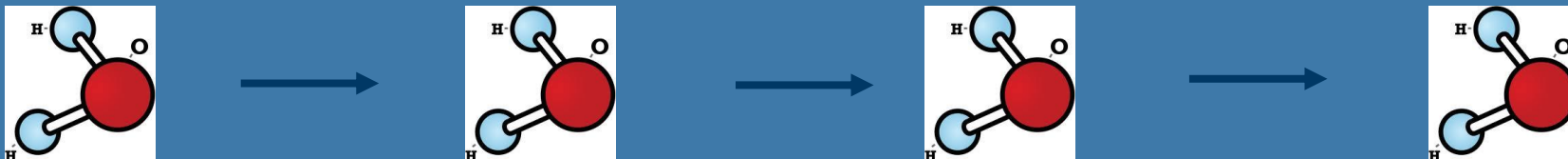
Summary of CAMP Part 1–

CAMP begins the social process of co-managing a shared aquifer –
because solutions are within the group of users

CAMP Part 2 Objective –

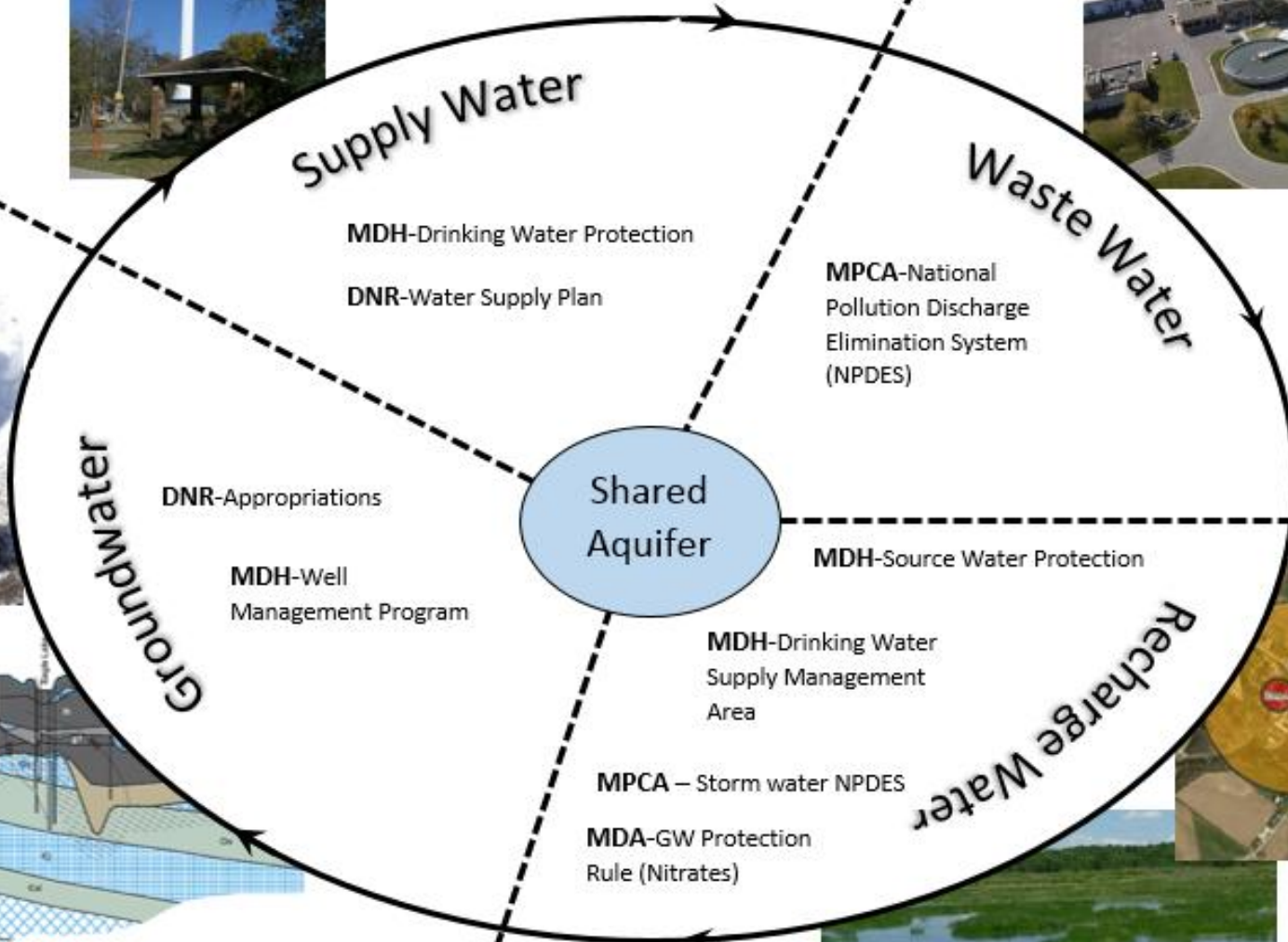
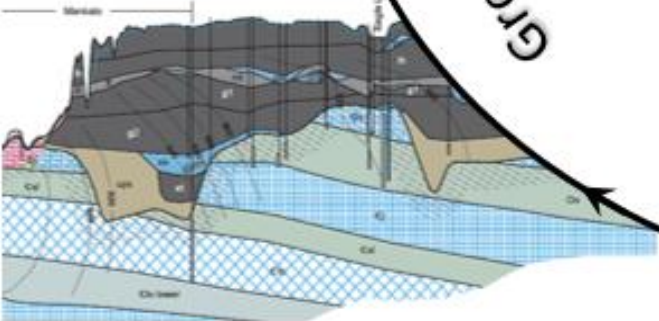
We take a look at the whole water supply cycle

Groundwater – Supply Water – Waste Water – Discharge/Recharge Water





C.A.M.P.: A Local - State Collaboration to Sustain a Community's Groundwater Cycle



Collaborators

LGUs

- Townships
- Municipalities
- Councils
- Counties/Boards
- SWCD
- WD
- WMO

Users

- Residential
- Commercial
- Industry
- Rural Water Systems

Other Partners

- MRWA
- Met Council



Key Aspects of CAMP

To Inform and Connect Users of Shared Aquifers

To Align: Local Land Use Decisions = Water Use Decisions

To Manage Aquifers as Joint Groundwater Checking Accounts

To Foster Collaboration to Reduce Use, Risks, and Costs
associated with Water Supply Cycle

DNR CAMP Website:

mndnr.gov/gwmp/camp

Thank you!

Tim Gieseke, DNR Region 4 Groundwater Planner

Tim.Gieseke@state.mn.us

507.359.6039